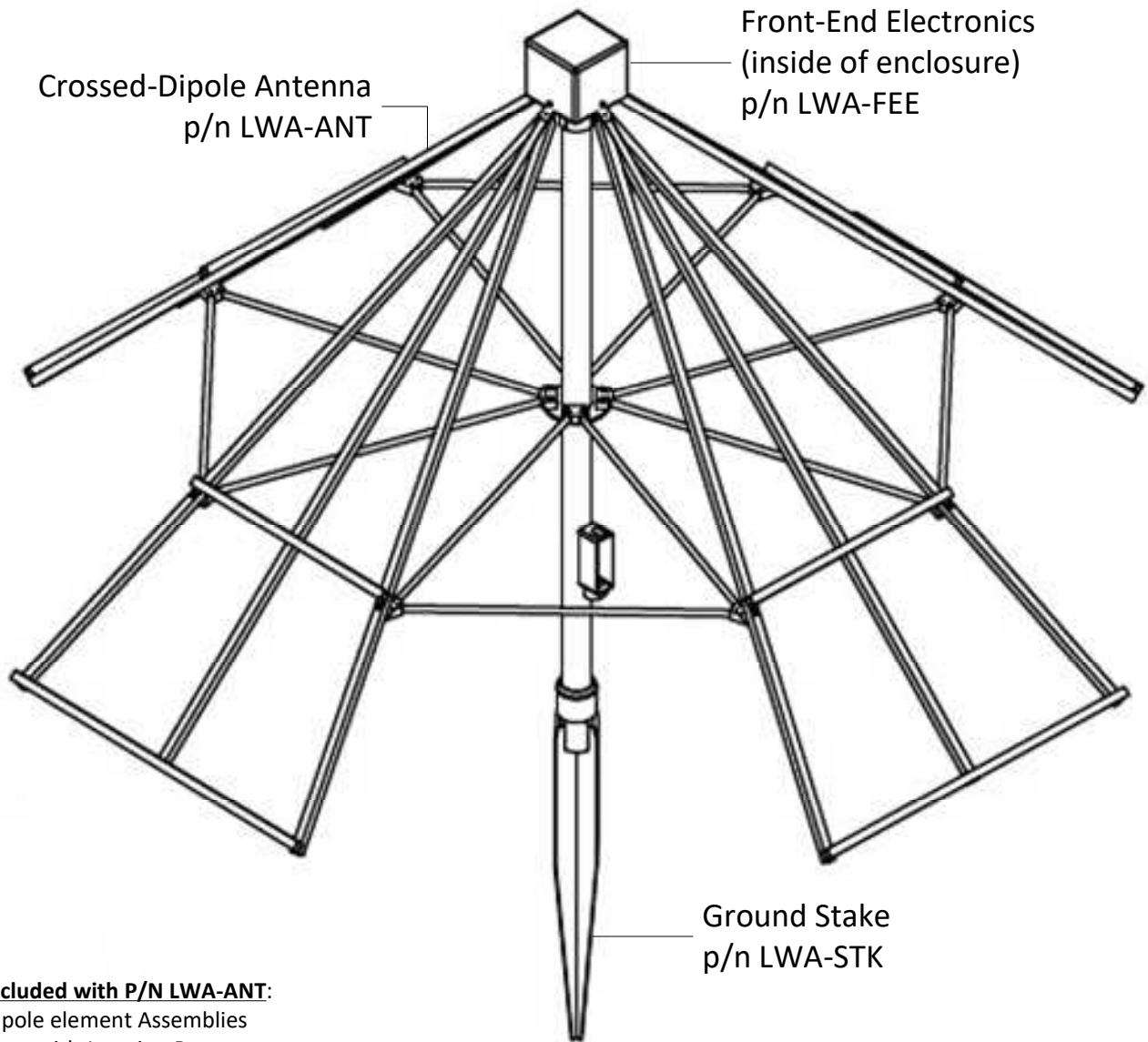


8 7 6 5 4 3 2 1

H H

LWA Antenna ~ Orderable Assemblies



G G

F F

E E

D D

C C

Included with P/N LWA-ANT:

- Dipole element Assemblies
- Mast with Junction Box
- CM Hub Assembly (FEE Enclosure)
- Triangle Assemblies with Center Flange
- All Fasteners and Hardware

Included with P/N LWA-STK:

- Ground Stake with Collar

Included with P/N LWA-FEE:

- Dual Front End Electronics (FEE) Assembly

Not Included:

- Coaxial Cables

B B

A A

DESCRIPTION	Orderable Assemblies
FILENAME	LWA PROJECT.VSD

8 7 6 5 4 3 2 1

8

7

6

5

4

3

2

1

H

H

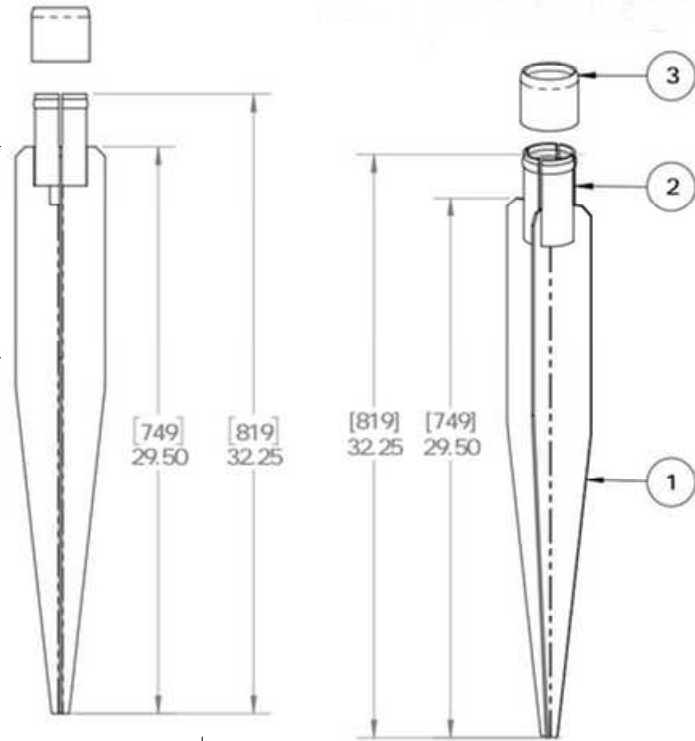
Ground Stake P/N LWA-STK Details

After driving Base Anchor Assembly, use collar tool or wood block and hammer to set collar and clamp mast to Base Anchor

Drive Base Anchor Assembly to this depth so that bottom of mast is flush with ground surface

- ① Base Anchor Assembly
- ② Mast Anchor Base
- ③ Mast Anchor Collar (Cap)

When driving Base Anchor Assembly, check vertical regularly (every inch)



Lengths shown for ISW-850. Total length is approximately 34 inches. ISW-600 is similar except total length is 24 inches.

G

G

F

F

E

E

D

D

C

C

B

B

A

A

SCALE	Dimensions as shown
DESCRIPTION	OZCO ISW-850 Post Anchor
FILENAME	LWA PROJECT.VSD

8

7

6

5

4

3

2

1

LWA Antenna ~ PLAN VIEW with Guys & Anchors

Knot Hint: Use a permanent knot that will not work loose in the wind such as the Anchor Bend or Round Turn & Two Half Hitches

3/16 or 1/4 inch diameter, Non-Conductive, UV & Weather Resistant Guy Strand (Rope) Typical of (8) pcs

Dipole Element Assembly Typical of (4) pcs

Fiberglass Triangle Assembly Typical of (4) pcs

Tie Guy Strand to Dipole Element Assembly

Hub Assembly on Mast

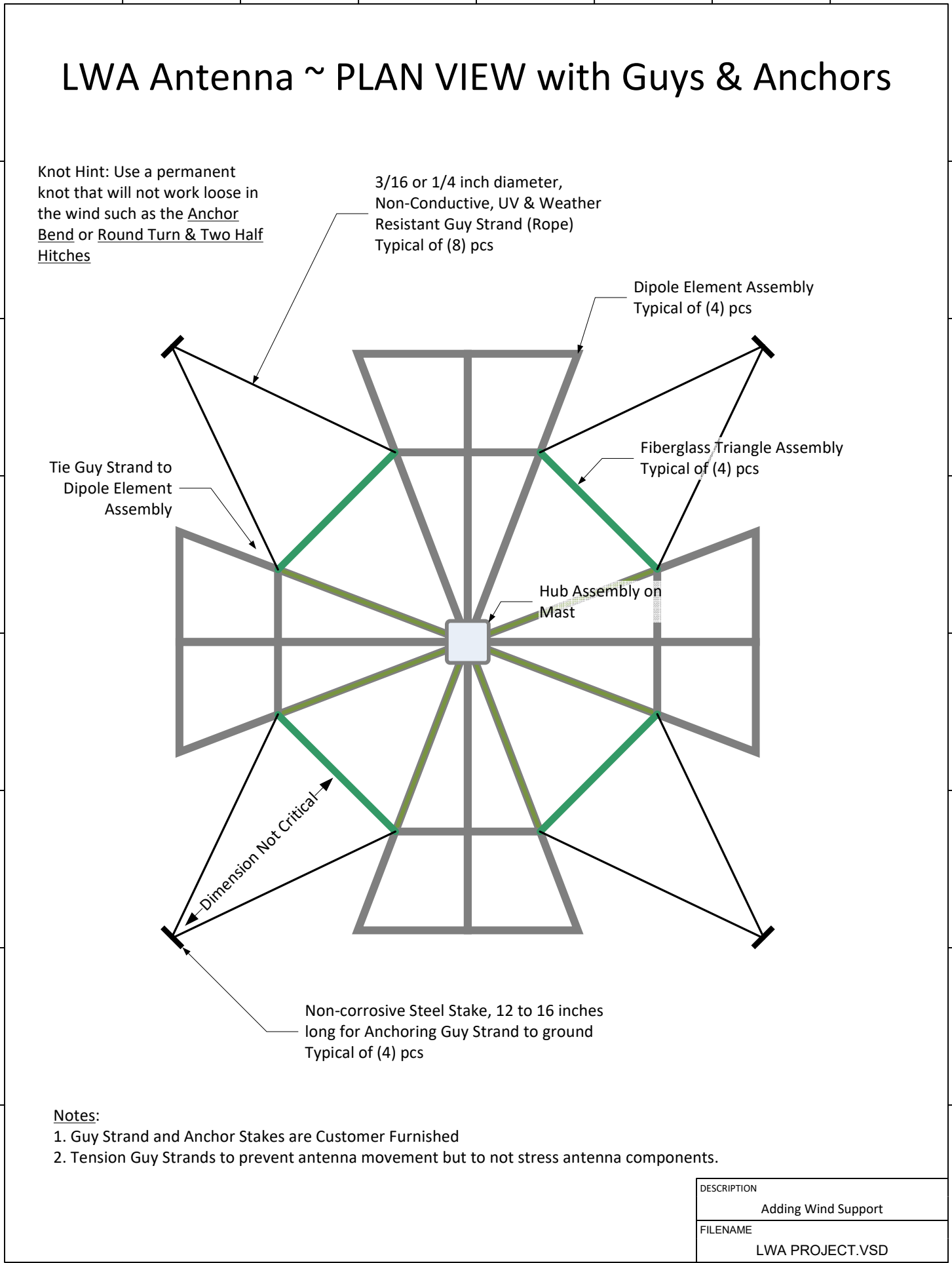
Dimension Not Critical

Non-corrosive Steel Stake, 12 to 16 inches long for Anchoring Guy Strand to ground Typical of (4) pcs

Notes:

1. Guy Strand and Anchor Stakes are Customer Furnished
2. Tension Guy Strands to prevent antenna movement but to not stress antenna components.

DESCRIPTION	Adding Wind Support
FILENAME	LWA PROJECT.VSD



8

7

6

5

4

3

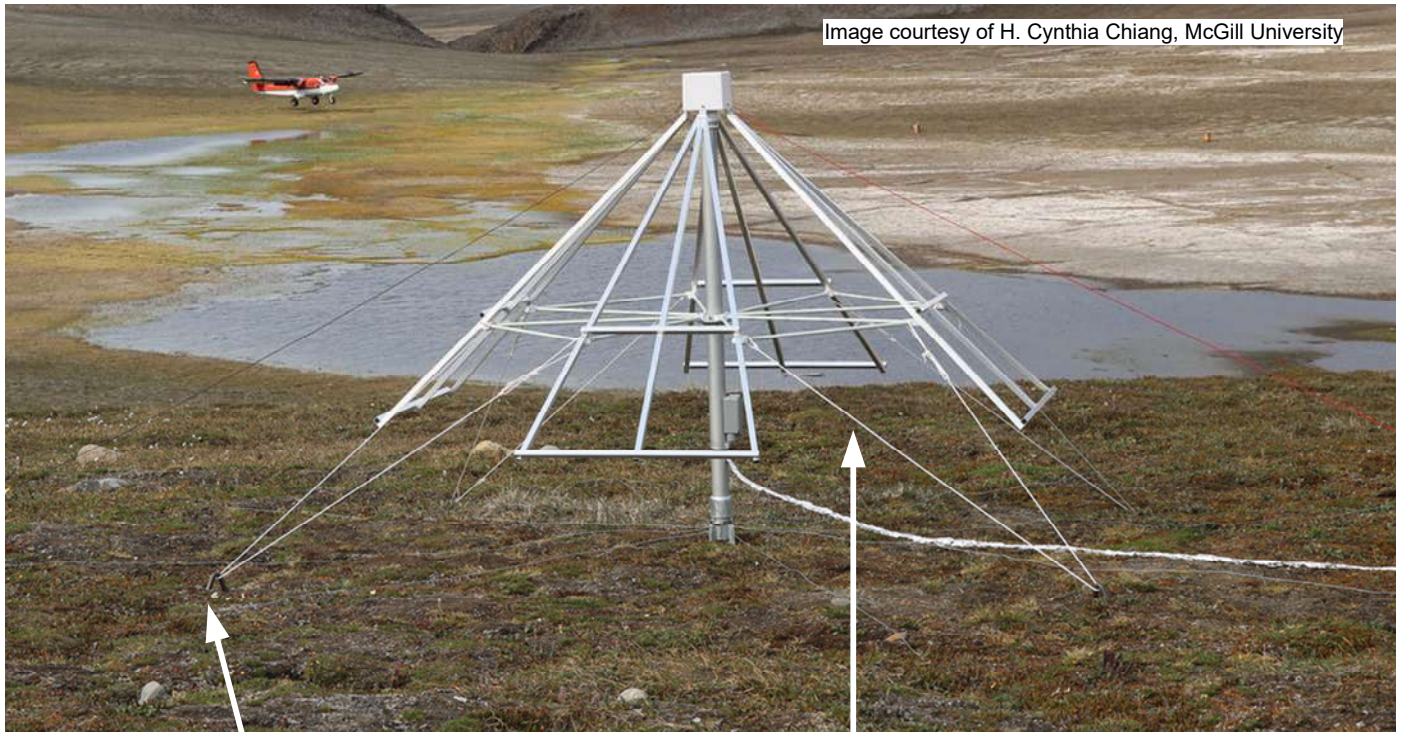
2

1

H

LWA Antenna ~ Guying & Anchors

H



G

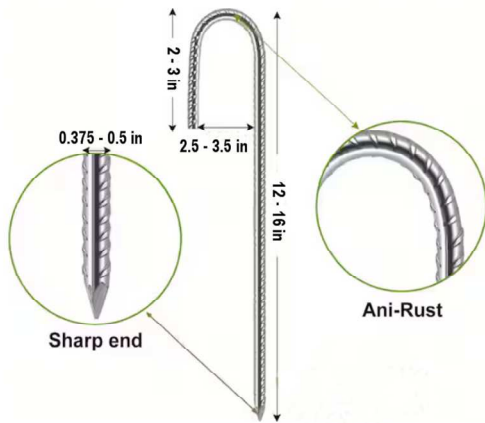
G

F

F

E

E



D

D

C

C

Steel Stake made from Reinforcing Steel (Rebar) with anti-rust coating

Non-conductive, UV and Weather resistant guy strand (rope)

B

B

Similar commercial products available at hardware stores

Example: <https://www.mastrant.com/>

A

A

DESCRIPTION	Adding Wind Support
FILENAME	LWA PROJECT.VSD

8

7

6

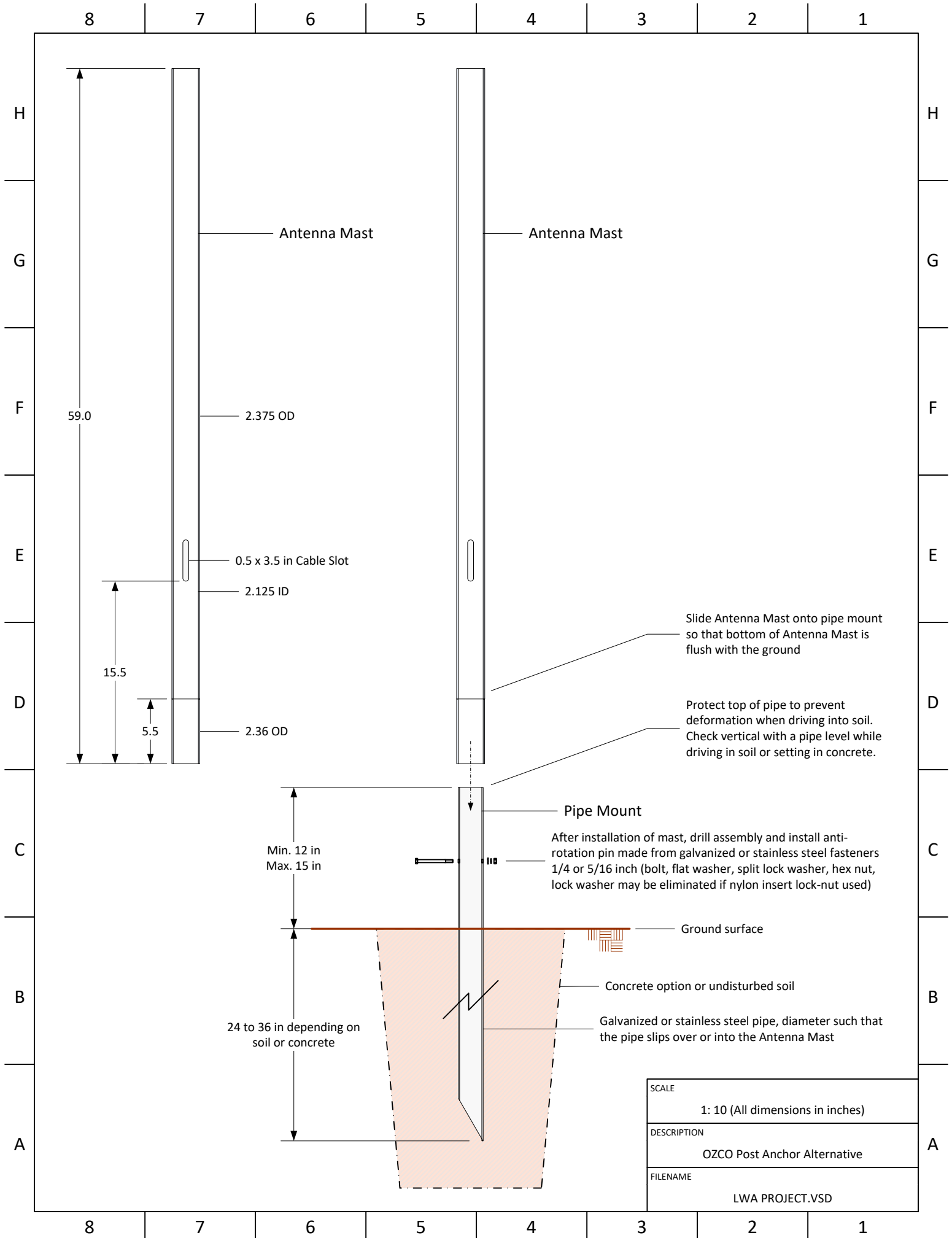
5

4

3

2

1



SCALE	1: 10 (All dimensions in inches)
DESCRIPTION	OZCO Post Anchor Alternative
FILENAME	LWA PROJECT.VSD

